

---

## Summer 2021 Primary Schools

Hello from the Laing and Shipley Art Galleries! This is the first edition of our Primary Schools Newsletter. We will be sending out termly updates from the team about opportunities, projects and workshops. In this edition we would like to highlight programmes for Summer and Autumn Term.



### Art Bites downloadable resources for schools

With the recent return to the classroom, we hope you are settling in well. The programmes we have on offer are launching Summer and Autumn 2021 Term. They have been designed to support you and the curriculums you are delivering. Highlights in this addition are the launch of our art oracy programme ARTiculate, with an adapted version available to book in the Summer break. The Linking programme offers a funded opportunity for you to engage with another local school. Next term, we are offering live streamed sessions into your classroom with supporting downloadable materials - Art Bites. We are also very excited about the arrival of the [Lindisfarne Gospels](#) to the Laing Art Gallery in Autumn 2022. We are offering briefings during the summer term so you can find out more about the schools programmes.

---



### **Primary Schools Arts Development Membership Scheme**

The membership allows your school and your teachers to benefit from a variety of our practical art workshops across the Shipley and Laing Art Galleries, including creative learning programmes, networking opportunities and CPD across the academic year. Savings can be made by schools that subscribe to be a member. We can support your journey towards [Artsmark](#) as an Artsmark Partner Organisation.

[Become a member >>](#)

---



### **Practical Art Teacher CPD**

We have been working with primary school teachers to develop a programme of continued professional development, creating a range of practical making sessions to support teachers to explore art in the classroom.

All of the sessions include suggestions and ideas of how you can use the relevant skills from EYFS through to upper KS2, in order to support ideas for progression in your pupils' work, linking closely to the Art & Design national curriculum and to our unique and accessible art collections.

[Find out more >>](#)

---



## Summer Term Schools Linking

[The Schools Linking Project](#) is a national programme which has been running successfully in schools for 16 years, creating year-long curriculum rich class links between schools.

The project links pairs of classes from the Newcastle area based on the mutual benefits for the schools. This summer we are inviting schools to link together exploring the themes: Who am I? - exploring identity; Who are we? - celebrating diversity; Where do we live? – promoting community; and How do we all live together? – championing equality.

Through this project we will:

- Link you with a school who you will meet virtually at a CPD event on **Tuesday 27 April, 4 - 5.30pm.**
- A virtual session in your classroom inspired by our portrait collection on the theme of identity.
- An artwork postcard exchange with your linked school.
- Celebration event in July 2021.

To book a place please express interest by email to **Nicola** at [learning@laingartgallery.org.uk](mailto:learning@laingartgallery.org.uk)

The project, developed by [The Linking Network](#), is nationally recognised as offering a positive, age appropriate curriculum contribution to spiritual, moral, social and cultural development of pupils, British values and the Prevent Duty.





### **Articulate: Primary - Oracy, language and communication through art**

This year's programme launch comes at a time when time children are returning to the classroom after long periods of time out of the classroom. Through *Articulate: Primary* we hope to support schools in providing arts opportunities for their pupils in a way that is practical, accessible and cross-curricular using debate and discussion in a fun and engaging way.

It uses learning strategies developed in a pilot project which was delivered in 2018/19. The programme supports development of oracy, communication and literacy skills using a variety of visual literacy and philosophical enquiry techniques devised to encourage conversation, debate, vocabulary building and collaborative working.

***"The nature of art allows for development of individual opinions and thoughts to take place, giving the children more ownership over their thoughts and outcomes. I would highly recommend the program as it is a valuable and engaging experience for children. In a generation of technology and video games it provides children the opportunity to explore new things and learn about different ways to express themselves." - Year 3 Teacher***

 [View our YouTube film documenting the impact of the pilot project](#)





## Primary Art Teachers and Educators Regional Network.

### Primary Art Teacher Educator Network

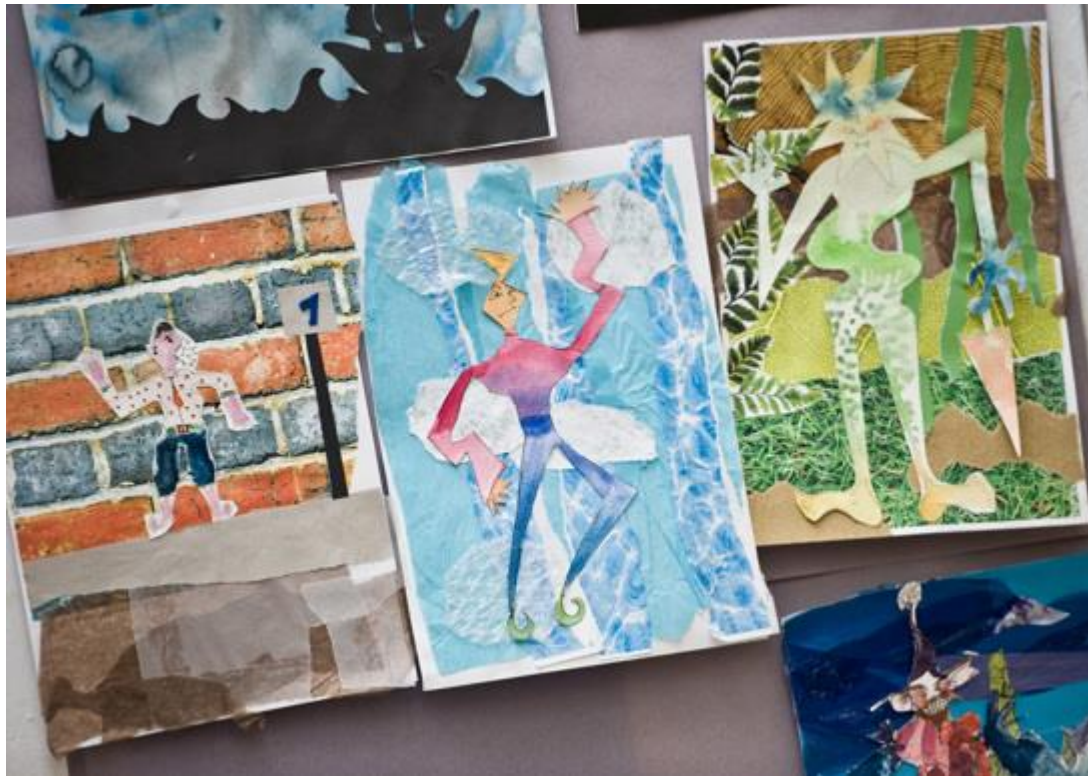
PATERN is support network for primary visual art education in the North East of England, to support teaching and learning, creative and inclusive curriculum models and offer support for all areas of the subject, including an opportunity for practical workshops.

Upcoming PATERN network meeting is **Thursday 10 June, 4.30 - 6.30pm** over Zoom (book below)

If you'd like to speak to a member of the team or book a session or onto a programme please get in touch with Anne, Nicola and Emma on [learning@laingartgallery.org.uk](mailto:learning@laingartgallery.org.uk)

[Book your free place here >>](#)

[Join the PATERN Facebook Group >>](#)



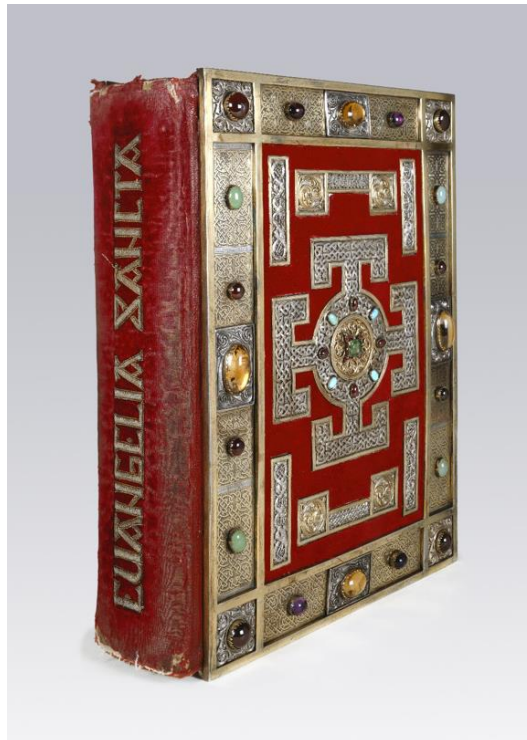
### **Summer Holiday Art Academy in Schools**

The Laing's popular [Art Academy](#) sessions for primary aged children is rolling out into schools this summer. Young people will have the opportunity to try out a range of art techniques which may include painting with acrylics and watercolours, drawing and illustrating, sculpting with clay and experimenting with printmaking. The programme will also include strategies developed by the [ARTiculate: Primary programme](#) using teamwork exercises, debate and discussion to encourage language development and communication.

There is also the opportunity for pupils to achieve the nationally accredited Explore Level Arts Award. More information about the Arts Award can be found on the [website](#).

[More info about Art Academy >>](#)

---



### **The Lindisfarne Gospels Schools Briefings**

The Lindisfarne Gospels, the most spectacular surviving manuscript from Anglo-Saxon England will be at the heart of this exhibition which will explore the meaning of the Lindisfarne Gospels in today's world. The Laing Art Gallery's [exhibition](#) will look at the ways in which the Gospel book, written on Holy Island in the early eighth century, can bring people together today by inspiring thinking about who we are and where we come from, about identity, creativity, learning and sense of place.

Alongside the Laing exhibition, there will be a supporting schools programme in keeping with the spirit of the exhibition providing opportunity for schools to participate in making this a truly regional celebration.

To book a place at these free short briefings please follow the Ticketsource booking link below. Once you have booked we will email a Zoom link to access the meeting the day before.

**13 May, 4.30-5pm (book [here](#))**

**17 June, 4.30-5pm (book [here](#))**

**8 July, 4.30-5pm (book [here](#))**

Image: Spine of Lindisfarne Gospels c. 700 (Cotton MS Nero D IV) (c) British Library Board

[Read more about the Lindisfarne Gospels >>](#)

---





### **Virtual Schools Offer**

Whilst we are unable to provide facilitated workshops at the gallery, our skilled and dedicated learning team are providing schools with a blend of virtual learning experiences and digital resources which may include specially prepared short video content and live streamed, interactive sessions. Many of these will be based around our usual facilitated activities, portraits, sculpture and landscapes.

If you are interested in getting involved with any of these activities please get in touch via [learning@laingartgallery.org.uk](mailto:learning@laingartgallery.org.uk)



Newcastle  
City Council



Supported using public funding by  
ARTS COUNCIL  
ENGLAND

TYNE & WEAR  
archives &  
museums

